



Max Machinery, Inc.
an ISO 9001:2008 certified company

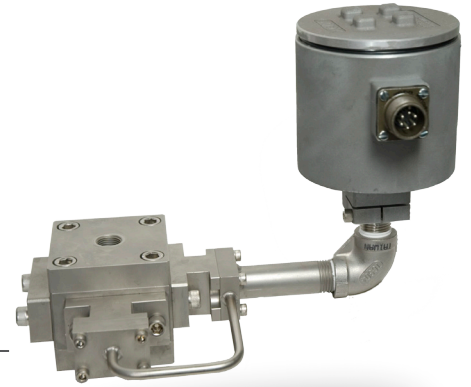
Model 234 Water Flow Meter 10 to 4000 cc/min

SPECIFICATIONS

Flow Range (at 1 cP)	10 to 4000 cc/min
Maximum Operating Pressure	140 bar (2000 psi)
Displacement	10.5 cc/rev
Weight	5.4 kg
Recommended Filtration	10 micron
Port Sizes	3/8" NPT
Fluids	Aqueous and non-lubricating liquids

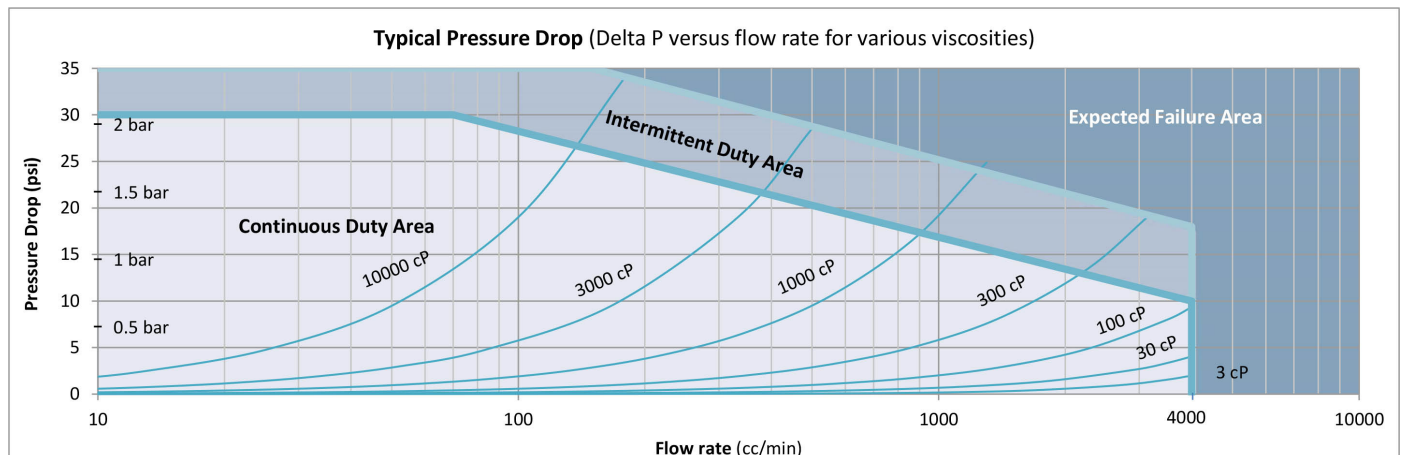
MATERIALS OF CONSTRUCTION

Body	Stainless steel, type 316
Pistons	Carbon
Bearings	Rulon
O Rings	Teflon®



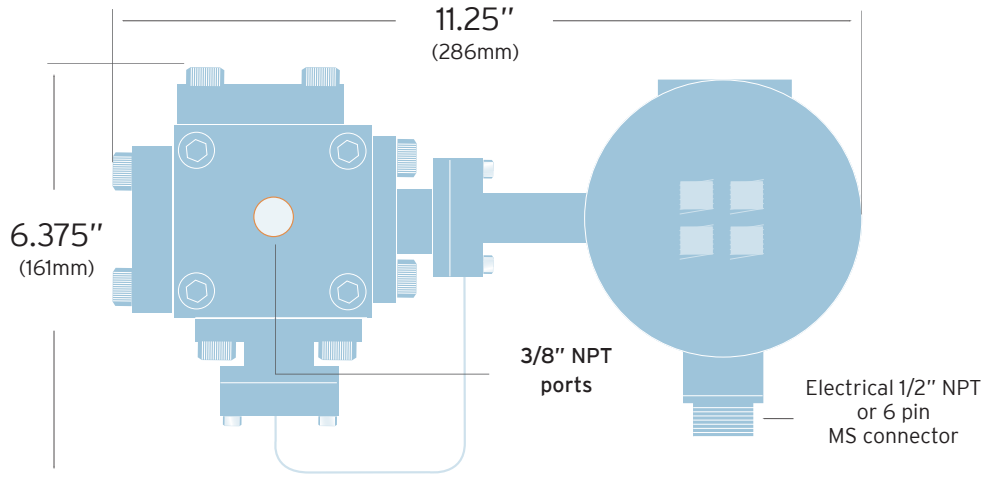
FREQUENCY TRANSMITTER

Output Signal	Pulse, 5 Vdc Single phase square wave, 1 - 500 pulses/revolution Quadrature square wave, 1 - 250 pulses/revolution/channel
Power Supply Requirements	5-26 Vdc @ 30ma
Ambient Operational Range	-18° C to 55° C
Metered Liquid Temp Range (based on 20° ambient)	5° C to 110° C
Compliance	CE Certified
Electrical Connection	6 pin Amphenol; configurable to 1/2" NPT

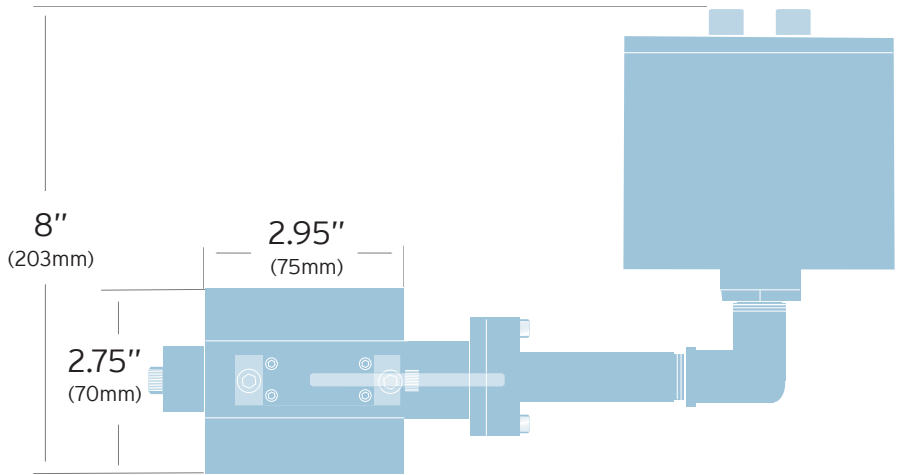


Model 234 Flow Meter (Frequency)

CONNECTIVITY/DIMENSIONS (Not to scale)



MODEL 234 TOP VIEW



MODEL 234 SIDE VIEW

ELECTRICAL CONNECTION – FREQUENCY TRANSMITTERS

	Amphenol Plug		
	Pin #	Mating Cable Wire Color	NPT model
Ground	A	Green	1
Common	B	Black	2
4.5 to 24VDC	C	Red	3
Square Wave Output	D	White	4
Phase A Output	E	Orange	5
Phase B Output	F	Blue	6

